



## SEP sesam Data Protection

SEP sesam Software, the technology leader in cross-platform data backup, data restore and disaster recovery delivers in 'Real Time' with its newest online / hot backup utility for PostgreSQL and Postgres Plus Database environments.

SEP sesam – Simple, Reliable, Better. We provide standardized, high performance data availability solutions for Professional IT environments of all sizes. SEP sesam and its associated products deliver seamless solutions for backup requirements – data security, data restore, disaster recovery, and encryption. Data backup has never been so easy.

SEP sesam delivers full support of Linux, Windows, Novell, SUN Solaris operating systems and the most varied Unix environments. SEP sesam is not just the best product for all these applications but the only solution that fits the requirements of the most demanding users in heterogeneous arenas.

## Standard Features

- Flexible Backup and Restore
- Disaster Recovery
- Intuitive, easy to use Graphical User Interface
- Cost savings using Central Administration Tools via LAN/WAN
- Parallel Backup Streams using SEP sesam Multiplex Technology
- Encryption of Datastreams and Backed up Data (Blowfish & AES256)
- Flexible Media Handling: Data can be stored on tapes, hard drives, remote disks located in NAS, SAN or WAN environments
- Disk to Disk to Tape (D2D2T) Backup
- English Support
- Backup, Restore & Disaster Recovery for Virtual Computers

# SEP sesam

## PostgreSQL Online / Hot DB Backup

### PostgreSQL & Postgres Plus (EnterpriseDB) Online / Hot Database Backup Module

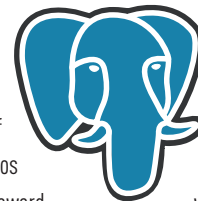
SEP sesam Software provides enterprise level backup, restore and disaster recovery for PostgreSQL and the Oracle® compatible Postgres Plus Database from EnterpriseDB.

Our SEP sesam Postgres Database Online / Hot Backup Module has been developed **EnterpriseDB®** and designed for optimal **The Enterprise Postgres Company** performance for PostgreSQL & Postgres Plus (EnterpriseDB) users. SEP design engineers worked tirelessly to fulfill the demanding requirements set by EnterpriseDBs' technical personnel and their user community. Requirements set for data availability, reliability and data security have been, according to EnterpriseDB, either met or exceeded!

This SEP sesam Module makes Online / Hot Database Backups of PostgreSQL and Postgres Plus DB's a reality. Interrupt free backup and interrupt free restore is now possible while the data base is running (hot).

SEP sesam PostgreSQL Server backup utilities combined with the functionality of the PostgreSQL and Postgres Plus database to allow the support of many backup methods. Central administration of large IT infrastructures and backup scenarios are now possible. All of SEP sesam's award winning features for system monitoring and management, including the Graphical User Interface (GUI), can be integrated and used during any backup, restore or disaster recovery operation.

By implementing a centralized backup procedure the user no longer needs additional resources (e.g. additional remote disk drives, expanded disk capacity, planning) - a positive effect lowering operating cost and time invested simplifying both deployment and maintenance.



© 04/2010 SEP AG. All rights reserved. The contained information can be changed without previous announcement.



## Global Storage Management

# SEP sesam

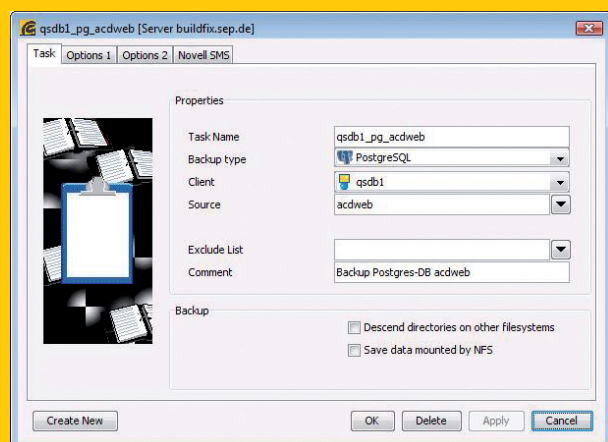
## PostgreSQL Online/Hot DB Backup



### Overview of Supported Operating Systems Running PostgreSQL & Postgres Plus

Operating Sytem	PostgreSQL 7	PostgreSQL 8	EnterpriseDB 8
SLES 8	i386	i386	
SLES 9	i386, x86-64	i386, x86-64	i386, x86-64
SLES 10	i386, x86-64	i386, x86-64	i386, x86-64
SLES 11	i386, x86-64	i386, x86-64	i386, x86-64
RHEL 4	i386	i386	
RHEL 5	i386, x86-64	i386, x86-64	i386, x86-64
Univention UCS 2.2	i386, x86-64	i386, x86-64	i386, x86-64

(Further O/S can be supported upon request)



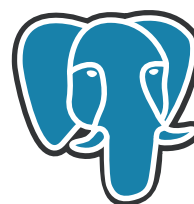
### Features

The easy to use and intuitive SEP sesam GUI offers the following backup options:

- Online / Hot Backup: Databases are still available during the backup procedure
- Additional safeguards options have been developed for administrative checkpoints during a full backup
- Offers a dedicated Checkpoint Backup
- Multiple Restore Options, e.g. Autorecovery, Point in Time Recovery, Checkpoint-Level
- Disaster Recovery Functionality for PostgreSQL and Postgres Plus Database Servers
- Point in Time Recovery and Disaster Recovery

**EnterpriseDB®**  
The Enterprise Postgres Company

PostgreSQL



SEP AG, Ziegelstrasse 1, 83629 Weyarn, Germany, +49 8020 180-0  
 NORTH AMERICA | SEP Software Inc., 94 Benthaven Place, Suite 100, Boulder, CO 80305, USA, +1-303-417-6316  
 FOR FURTHER INFORMATION, VISIT [www.sep.de](http://www.sep.de) / [www.sepsoftware.com](http://www.sepsoftware.com)